



MedVision

为生命而创新



www.medvisiongroup.com.cn

HystVision/TUR 宫腔镜和TUR检查模拟器


MedVision

Surgical Simulator
手术模拟器

Diagnostic and Surgical
Skills in Hysteroscopy/TUR
宫腔镜和TUR检查诊断与手术技巧







HystVision/TUR 宫腔镜和TUR检查模拟器

HystVision/TUR is a comprehensive training solution for Hysteroscopy/TUR examinations that includes training and exam modes, detailed performance data after each module, high definition graphics, videos, text materials and 3D anatomy atlas.

The realistic feel of the haptic, makes HystVision/TUR an essential simulation tool to build confidence and competence when performing such a procedure.

HystVision/TUR是宫腔镜检查 and TUR检查的综合培训解决方案，提供培训和检查模式、每个模块的详细性能数据、高清图形、视频、文本材料和三维解剖图谱。

HystVision/TUR可提供真实的触感，这使其成为执行此类操作时建立信心和培养能力的重要模拟工具。

The simulator comes in various options. There are HystVision and TURVision modules a combined HystVision/TUR version.

该模拟器提供多种版本选择。有HystVision和TURVision版本，以及组合的HystVision/TUR版本





- Mobile and convenient: sturdy wheelbase with adjustable height. A perfect solution for simulation centers and training rooms
- Two Full HD monitors: one touch-sensitive for all your menu controls and one for endocamera feed
- Proprietary magnetic feedback system
- Adjustable height
- Wheels for easy transportation
- Pedals for coagulation and electric dissection

- 可移动、操作方便：轴距稳固，高度可调。模拟中心和培训室的完美解决方案
- 两个全高清显示器：一个用于所有菜单控件的触摸屏，一个用于内窥镜馈送
- 专有磁反馈系统
- 高度可调
- 配备轮子，便于移动
- 凝血和电解剖用踏板

Resectoscope for hysteroscopy

We provide instrument imitations for every instrument manufacturer brand out there, available by special order

宫腔镜用电切镜

我们针对每个仪器制造商品牌提供仪器仿制品，可根据特殊订单订购

Software

- Training and exam modes
- Detailed statistics after each module
- High definition 3D graphics
- Visual tips and guidelines
- Video and text materials
- 3D anatomy atlas

软件

- 培训与考试模式
- 每个模块后有详细数据统计
- 高清三维图形
- 视觉提示和指南
- 视频和文字资料
- 三维解剖图谱

Magnetic feedback

Our proprietary magnetic feedback system allows for unprecedented immersion.

Furthermore, unlike mechanical feedback systems, it is far more reliable

磁反馈

我们专有的磁反馈系统可提供给用户前所未有的沉浸感。此外，与机械反馈系统不同，磁反馈系统更加可靠

HystVision/TUR智能版



- Mobile and convenient, forged with on-the-go functionality in mind
- Full HD monitor for good quality visuals
- Touch-sensitive Full HD monitor for all menu controls
- Magnetic feedback system allows for a unique, realistic feel of tissue resistance
- Real resectoscope handle
- Pedals for coagulation and electric dissection
- 可移动、操作方便，随时随地可用
- 全高清显示器，提供高质量的视觉效果
- 触摸式全高清显示器，用于所有菜单控件
- 磁反馈系统可提供独特、逼真的组织阻力感
- 真实的电切镜手柄
- 凝血和电解剖用踏板

Gynecology Modules 妇科模块

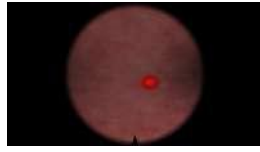
Essential skills

基本技能



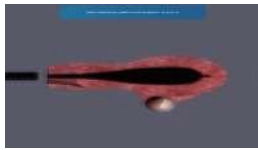
0° viewing angle camera uterus inspection

0°视角摄像机子宫检查



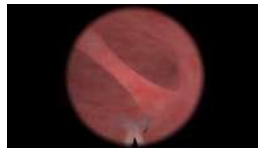
30° viewing angle camera uterus inspection

30°视角摄像机子宫检查



Uterus distention mastering

子宫扩张控制



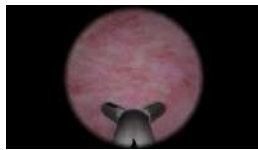
Resection of the intrauterine septum

子宫中隔切除术



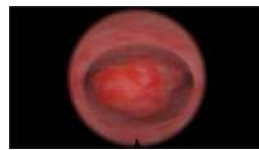
Polypectomy using grasper and scissors

钳剪式息肉切除术



Taking a biopsy from the uterine wall

从子宫壁取活组织检查



Resection of the polyp

息肉切除术

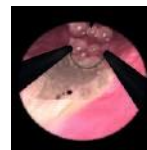
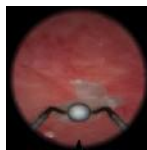
Diagnostic hysteroscopy

诊断性宫腔镜检查



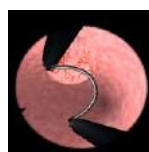
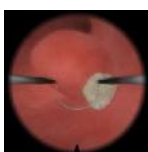
Endometrial ablation

子宫内膜切除术



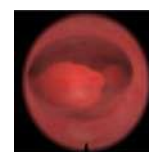
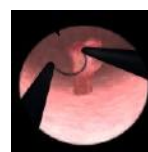
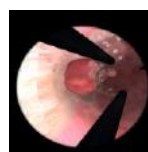
Removal of myoma submucosal nodes

粘膜下肌瘤结节切除术



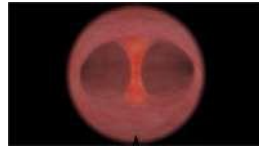
Polypectomy

粘膜下肌瘤结节切除术



Advanced resection

高级切除术



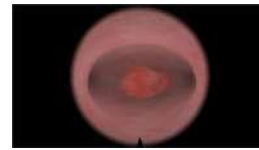
Resection of the intrauterine septum

子宫中隔切除术



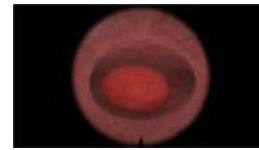
Resection of the myoma type 0 according to ESGE 1

根据ESGE1行0型肌瘤切除术



Resection of the myoma type 0 according to ESGE 2

根据ESGE2行0型肌瘤切除术



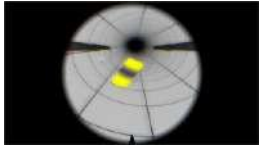
Resection of the myoma type 1-2 according to ESGE

根据ESGE行1-2型肌瘤切除术

Urology Modules 泌尿科模块

Essential skills

基本技能



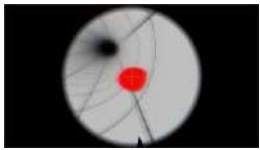
Basic skills of working with endoscopic instruments

使用内窥镜仪器的基本技能



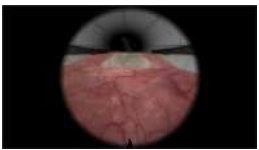
Basic skills with resectoscope for angular optics

角光学切除镜的基本技能



Basic skills with resectoscope

电切镜的基本技能



Resection of the prostate share

前列腺部分切除



Test of hemostasis

止血试验

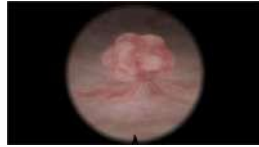


Visualization of anatomical landmarks

可视化解剖标志

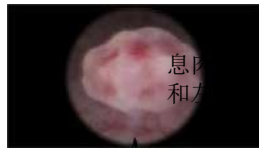
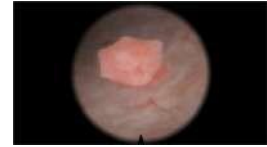
Transurethral resection of bladder tumor

经尿道膀胱肿瘤切除术



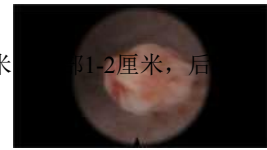
Polyp diam. 2-3 cm, base 1-2 cm, rear and left wall

息肉直径2-3厘米，基部1-2厘米，后壁和左壁



Polyp diam. 5 cm, base 2.5-3 cm, rear and right wall

息肉直径5厘米，基部2.5-3厘米，后壁和右壁



Creeping polyp, height 1 cm, base 3x2 cm, right wall

匍行息肉，高1厘米，基部3x2厘米，右壁

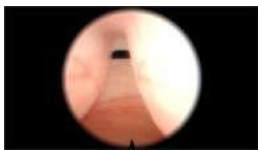


Two polyps, diam. 4 cm and 3 cm, bases 2x2 cm and 2 cm, back and left walls

两个息肉，直径4厘米和3厘米，基部2x2厘米和2厘米，背面和左壁

Transurethral resection of the prostate

经尿道前列腺切除术



Large adenoma with an average lobe
具有平均叶的大腺瘤



Large adenoma with lateral lobe, without middle lobe
大腺瘤伴侧叶，无中叶



Large adenoma with lateral lobes, with an average lobe
大腺瘤伴侧叶，具有平均叶



Medium sized adenoma with medium lobe

中型腺瘤伴中叶



Medium sized adenoma without middle lobe
中型腺瘤，无中叶



Small adenoma with an average lobe
小腺瘤伴平均叶



Small adenoma without middle lobe
小腺瘤，无中叶

Have you seen our patient simulators? 看看我们不同适用年龄阶段的
患者模拟器



Leonardo
成人模拟器



Mia
新生儿模拟器



Arthur
儿童模拟器

MedVision is an innovative and fast-growing company that specializes in designing and manufacturing high-fidelity medical simulators and having more than nine years of history in the development of medical simulation equipment.

MedVision是一家创新和快速发展的公司，专业设计和制造高保真医疗模拟器，在医疗模拟设备的开发方面拥有超过9年的历史。



服务

我们知道您在教育项目上做出了巨大的投资，因此我们设计了充分的服务解决方案，从选择正确的模拟器到将其完全集成到您的模拟项目中，我们在每一个步骤都提供了帮助。

无论是产品安装、预防性维护、故障排除还是维修，我们的团队都将帮助您优化模拟器的全部功能，帮助您高效地实现项目的目标。

有关我们服务方案的进一步信息，请联系您的区域代表。



联系我们

请发送电子邮件与当地区域代表联系：

poyton@poyton.cn



作为一家国际公司，**MedVision**一直致力于通过模拟促进医疗保健领域的优质教育发展。我们利用创新设计和尖端技术打造各种模拟器，包括成人、儿童、新生儿和手术模拟器。欲了解更多关于我们产品的信息，请联系您当地的区域代表。

销售查询：

大中华区域： 0086-15921959878/0086-15901939090 Email: poyton@poyton.cn

全球，日本



+8 (104) 571-66497

mail@medvision.jp

欧洲



+43 (664) 414-8288

sales@mse-group.co

美国



+1 (888) 584-7119

sales@medvisiongroup.com

独联体、中东、
非洲



+7 (843) 227-4063

sales@medvisiongroup.com